

## PONY PUMP® SERIES - 1/10 HP

### APPLICATIONS

Commercial, industrial, and home uses where liquid must be transferred

### FEATURES

- Self-priming for instant delivery or dewatering up to 6 ft (1.8 m)
- Non-submersible stainless steel or plated brass pump body
- Rugged metallic handle for easy portability
- Dual threaded intake and discharge with both 3/4" male garden hose thread and 3/8" FNPT
- Model 360K includes pump, hose, strainer, and suction adapter
- Separate kit options available
- Includes 2 extra impellers and gasket
- Model 365 and 365S include 6 ft (1.8 m) lead wires with battery alligator clips
- Models 360 and 365 have a nitrile shaft seal
- Model 370 has a fluoroelastomer shaft seal for improved temperature and abrasion resistance



### SERIES SPECIFICATIONS

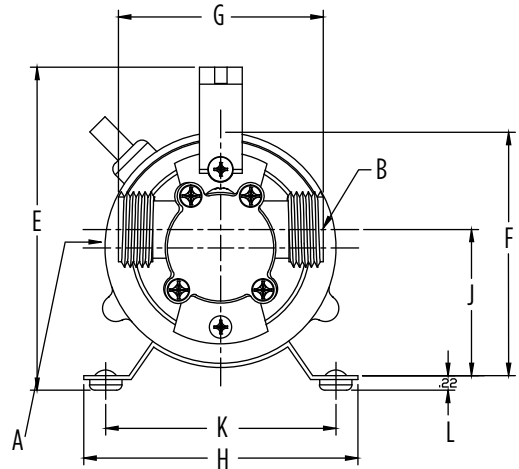
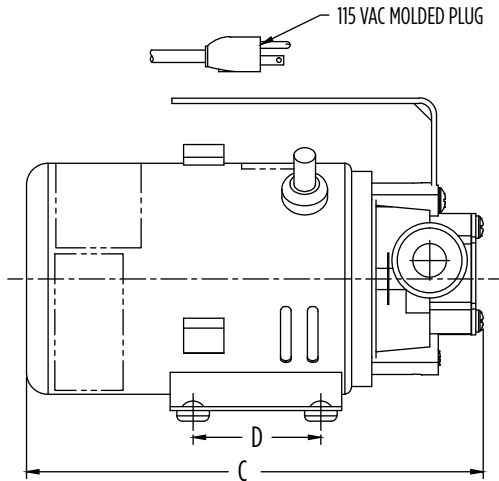
| Volts  | Hz | Amps |       | Watts | Performance<br>(GPH @ Height in Feet) |     |     |     | Shut-Off<br>(ft) | PSI  |
|--------|----|------|-------|-------|---------------------------------------|-----|-----|-----|------------------|------|
|        |    | FLA  | Start |       | 1'                                    | 5'  | 10' | 20' |                  |      |
| 115    | 60 | 1.6  | 2.4   | 91    | 360                                   | 330 | 300 | 250 | 25'              | 10.8 |
| 12 VDC | -  | 7    | 14    | 84    | 300                                   | 270 | 240 | 202 | 25'              | 10.8 |

| Item No. | Model | HP   | Volts  | Material        | Operation    | Cord                      | Weight             |
|----------|-------|------|--------|-----------------|--------------|---------------------------|--------------------|
| 555112   | 360   | 1/10 | 115    | Plated Brass    | Self-Priming | 6'<br>1.8 m               | 3.4 lbs<br>1.54 Kg |
| 555110   | 360S  | 1/10 | 115    | Stainless Steel | Self-Priming | 6'<br>1.8 m               | 3.4 lbs<br>1.54 Kg |
| 555113   | 370   | 1/10 | 115    | Plated Brass    | Self-Priming | 6'<br>1.8 m               | 4.7 lbs<br>2.12 Kg |
| 555602   | 365   | 1/10 | 12 VDC | Plated Brass    | Self-Priming | 6' Leads w/clips<br>1.8 m | 4.7 lbs<br>2.12 Kg |
| 555606   | 365K  | 1/10 | 12VDC  | Plated Brass    | Self-Priming | 6' Leads w/clips<br>1.8 m | 7.0 lbs<br>3.2 Kg  |
| 555203   | 365S  | 1/10 | 12 VDC | Stainless Steel | Self-Priming | 6' Leads w/clips<br>1.8 m | 4.7 lbs<br>2.12 Kg |
| 555111   | 360K  | 1/10 | 115    | Plated Brass    | Self-Priming | 6'<br>1.8 m               | 8.0 lbs<br>3.6 Kg  |

# UTILITY PUMPS

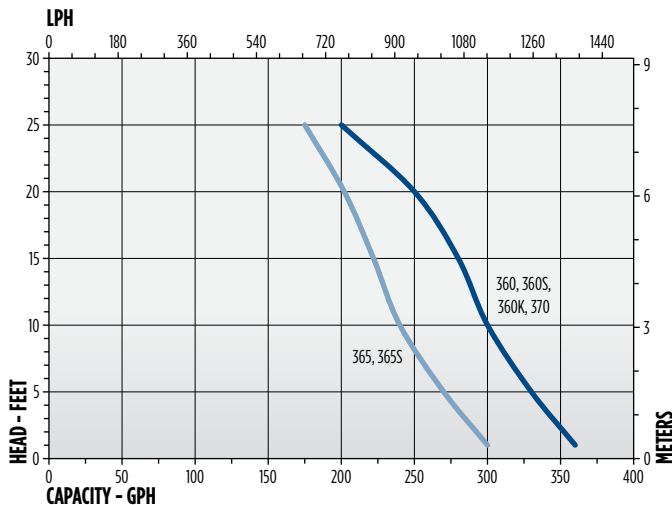
## PONY PUMP® SERIES - 1/10 HP

### ENGINEERING DATA



| Model  | A                   | B                  | C                 | D                | E                 | F                | G                | H                 | J                | K                | L               |
|--------|---------------------|--------------------|-------------------|------------------|-------------------|------------------|------------------|-------------------|------------------|------------------|-----------------|
| 115 V  | 3/4" GHT<br>1.91 cm | 3/8" NPT<br>9.5 mm | 6.73"<br>17.09 cm | 1.87"<br>4.75 cm | 4.68"<br>11.89 cm | 3.90"<br>9.91 cm | 3.00"<br>7.62 cm | 4.25"<br>10.80 cm | 2.26"<br>5.74 cm | 3.37"<br>8.56 cm | 0.22"<br>5.6 mm |
| 12 VDC | 3/4" GHT<br>1.91 cm | 3/8" NPT<br>9.5 mm | 5.93"<br>15.06 cm | 1.87"<br>4.75 cm | 4.18"<br>10.62 cm | 3.13"<br>7.95 cm | 3.00"<br>7.62 cm | 3.37"<br>8.56 cm  | 1.82"<br>4.62 cm | 3.37"<br>8.56 cm | 0.22"<br>5.6 mm |

### PERFORMANCE DATA



### OPTIONAL KITS

| Item No. | Model     | Includes   | Kit Used On                    |
|----------|-----------|--|--------------------------------|
| 555702   | HRK-360S  | (2) Each - Buna Impeller with SST Insert, Buna Cover Gaskets<br>(1) Each - SST Cam, SST Cam Screws, SST Volute Cover, Cam Gasket<br>(4) Each - Volute Cover Screws | All Models                     |
| 555706   | IRK-360   | (2) Each - Buna Impellers with Brass Insert, Buna Cover Gaskets  | 555111, 555112, 555602         |
| 555710   | HW-360    | (1) Each - 10 ft Garden Hose, SST Spring Strainer, Suction Adapter   | All Models                     |
| 555713   | IRK-360S  | (2) Each - Buna Impellers with SST Insert, Buna Cover Gaskets  | 555110, 555203                 |
| 555714   | ISRK-360S | (2) Each - Buna Impellers with SST Insert, Buna Cover Gaskets<br>(1) Each - Slinger, Viton U-Cup Seal, Felt Washer, Retainer Ring                                  | All Models                     |
| 555705   | WB-360    | Brush Kit: (2) Each - White Caps, Brushes, Covers with Springs   | 555502, 555103, 555507, 555122 |