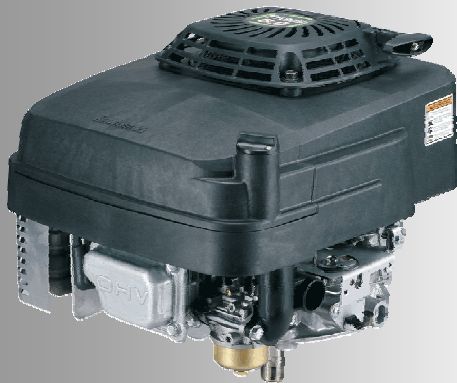
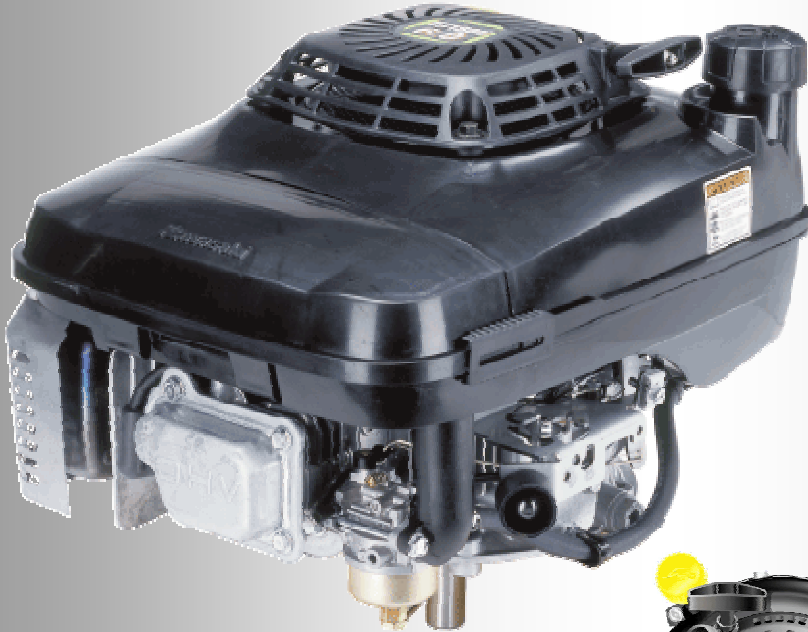


FJ180V

6 Hp



Features:

- Overhead V-valve
- Pressurized lubrication (splash)
- Electronic spark ignition
- Dual element air cleaner
- Automatic compression release (ACR)
- Rotating grass screen
- Internally vented carburetor
- Cast iron cylinder liners
- High inertia flywheel
- Large sealed fan

Options:

- Crankshaft PTO options
- 12V Solenoid shift starter
- Spin-on oil filter

Engine Type	Air-Cooled, OHV, Single cylinder, Vertical PTO
Number Of Cylinders	1
Displacement	179 cc
Bore x Stroke	65 x 54 mm
Compression Ratio	8.5 : 1
Maximum Power	6.0 HP (4.5 kW) @3600 rpm
Maximum Torque	11.8 Nm @ 2800 rpm
Spec. Fuel Consumption	340 g/kW.h
Dry Weight	13.5 kg
Oil Capacity	0.6 l
Fuel Capacity	2.0 l
Dimensions (LxWxH)	391 x 322 x 358 mm

