

Product information presented here reflects conditions at time of publication. Consult factory regarding discrepancies or inconsistencies.



**PUMP COMPANY**

Zoeller Family of Water Solutions™

MAIL TO: P.O. BOX 16347 • Louisville, KY 40256-0347  
 SHIP TO: 3649 Cane Run Road • Louisville, KY 40211-1961  
 (502) 778-2731 • 1 (800) 928-PUMP • FAX (502) 774-3624

visit our web site:  
[www.zoeller.com](http://www.zoeller.com)



## THE "FULL-FLOW" UNICHECKS

**30-0163**  
**30-0164**

**1¼" CAST IRON NPT**  
**1½" CAST IRON NPT**



30-0163  
 Pictured

Outside dimensions  
 5 7/16" W x 4" W x 6 1/4" H



- Vertical or horizontal installation
- Full-flow design, no restrictions
- Stops backflow of water
- Standard, 1¼", 1½", 2", 3" female NPT pipe
- Neoprene polyester reinforced flapper, smooth edge design with cast iron and noncorrosive metal backing plates & stainless steel fastener
- Corrosion-resistant powder coated epoxy finish
- Rated at 50 PSI (115 feet of head) at 130°F
- Stainless steel bolts
- 1 per carton
- Weight: 30-0163, 7.5 lbs.; 30-0164, 7.5 lbs.;
- 30-0152, 10 lbs.; 30-0160, 18 lbs.
- Suitable for installation below basin cover

**30-0152**  
**30-0160**

**2" CAST IRON NPT**  
**3" CAST IRON NPT**



30-0160  
 Pictured

Outside dimensions  
 6 5/8" W x 6 5/8" W x 8" H

**30-0021**  
**30-0151**

**2" PLASTIC SLIP X SLIP UNIONS**  
**2" CAST IRON SLIP X SLIP UNIONS**

- Full 2" flow design - meets BOCA (P.604.2) 2" full flow pump code
- Checks backflow of water and sewer gas
- Simple to install (no threading of pipe required). Save time & material costs
- Neoprene gasket and flapper, weighted with heavy stainless steel metal backing plates and rivet
- Can be installed on vertical or horizontal line
- Slips over PVC, steel pipe or copper piping
- Reduces motor and pump noise from plumbing system
- 6 per carton
- Flexible neoprene slip x slip union includes stainless steel clamps for low pressure systems. Avoid more than 10 ft. static head above the check valve. 4.3 PSI at 130°F
- Extra wide hinge to reduce hinge stress
- Plastic check has PVC body and can be installed with solvent welded couplings for pressure systems to 25 PSI, 57 ft. of head (P/N 30-0023)
- Model 30-0151 has corrosion-resistant powder coated epoxy finish.
- Plastic check individual rack pack Model 30-0022



30-0151  
 Cast Iron



30-0021  
 Pvc Plastic

Consult Factory or local representative for state approvals

**30-0181**  
**30-0200**

**1¼" - 1½" SLIP X SLIP UNION**  
**1¼" - 1½" SLIP X SLIP UNION W/ SS SCREW & CLAMPS**

- Flapper bends over a radius, no sharp 90° edges — lengthens life of flapper hinge
- PVC plastic check body, ultrasonically welded and can be solvent welded for rigid pressure rated piping systems to 25 PSI, 57 ft. of head at 130°F (30-0182)
- Slip x slip for 4.3 PSI, 10 ft. of head at 130°F. Avoid more than 10 ft. static head above the check valve.
- Vertical or horizontal installation
- Available in individual packages for pegboard display (30-0181)
- All stainless steel screws, nuts and clamps on model 30-0200 only
- Stainless steel clamps with zinc screws on model 30-0181 only
- Designed to reduce water hammer
- 10 per carton



30-0181  
 Pictured



30-0200  
 Pictured

# HIGH-TEMPERATURE "FULL-FLOW" UNICHECKS

- 30-0214** 1¼" CAST IRON NPT
- 30-0215** 1½" CAST IRON NPT
- 30-0216** 2" CAST IRON NPT



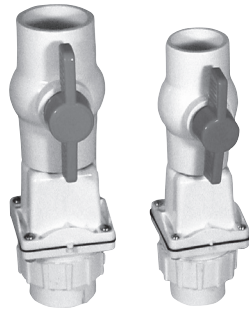
30-0214  
Pictured



- Use with 2000 & 3000 series high-temperature pumps
- Vertical or horizontal installation
- Full-flow design, no restrictions
- Stops backflow of water
- Standard, 1¼", 1½", 2" female NPT pipe
- EPDM strand-reinforced flapper, smooth-edge design, with cast iron and noncorrosive metal backing plates & stainless steel fastener.
- Corrosion-resistant powder coated epoxy finish
- Rated at 50 PSI (115 feet of head) at 200°F
- Stainless steel bolts
- 1 per carton
- Weight: 30-0214, 7.5 lbs.; 30-0215, 7.5 lbs.; 30-0216, 10 lbs.

## **Tri-Check®**

- 30-0100**  
1½" PVC CHECK VALVE / BALL VALVE UNION COMBINATION
- 30-0101**  
2" PVC CHECK VALVE / BALL VALVE UNION COMBINATION



30-0101  
Pictured

30-0100  
Pictured

- Full-flow check valve design
- Threaded union allows pump to be removed without disrupting discharge piping.
- Saves time and money - easy to install
- Neoprene gasket and flapper, weighted with stainless steel backing plates and rivet
- Can be installed on vertical or horizontal pipe
- Meets plumbing codes requiring a ball valve installed in conjunction with a check valve.\*

## **The "Combo"**

- 30-0102**  
1½" PVC CHECK VALVE UNION COMBINATION
- 30-0103**  
2" PVC CHECK VALVE UNION COMBINATION



30-0103  
Pictured

30-0102  
Pictured

- All stainless steel screws
- Replaceable flapper in the check valve
- Extra wide hinge to reduce stress
- Rated for 25 psi, 58 ft. of head
- 6 Per carton (30-0100 & 30-0101)
- 9 Per carton (30-0102 & 30-0103)

\*Consult Factory or local representative for state approvals

## INLINE CHECK VALVE

- 30-0238** 1½" INLINE CHECK VALVE

- Rubber coupling with stainless steel clamps
- Threads into pump discharge
- Pre-drilled weephole
- 4.3 PSI, 10 ft. of Head
- Vertical installation only



30-0238  
Pictured



**PUMP COMPANY**

MAIL TO: P.O. BOX 16347 • Louisville, KY 40256-0347  
SHIP TO: 3649 Cane Run Road • Louisville, KY 40211-1961  
(502) 778-2731 • 1 (800) 928-PUMP • FAX (502) 774-3624

**Your Peace of Mind is Our Top Priority®**

visit our web site:  
[www.zoeller.com](http://www.zoeller.com)