

WAYNE®

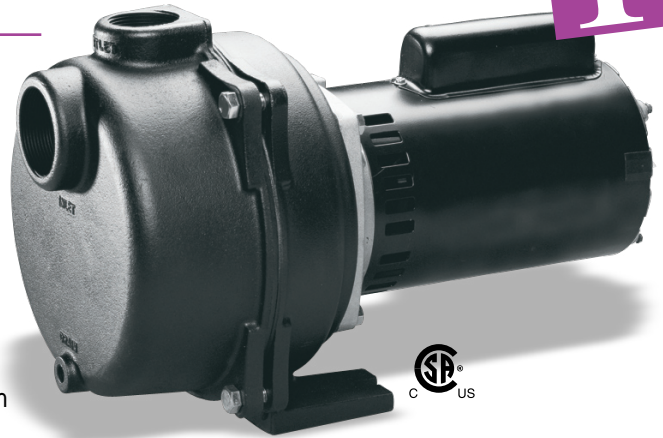
| utility | sump | sewage | well | **LAWN** | pool | specialty |

LAWN PUMPS

permanent

CAST IRON SPRINKLING PUMP

- 2 HP pumps up to 4310 @ 5' (30 PSI)
1.5 HP pumps up to 3480 @ 5' (30 PSI)
1 HP pumps up to 2570 @ 5' (30 PSI)
3/4 HP pumps up to 2320 @ 5' (30 PSI)
- Durable Cast Iron Volute
- High Efficiency Dual Voltage Motor (120/240) - Factory Wired for 240 Volt Installation (WLS200 is 240 Volt Only)
- 2" NPT Suction with 1-1/2" NPT Discharge for Maximum Water Flow
- Operates An Underground Sprinkling System Using a High Volume Of Water At Low Pressure



PERFORMANCE @ 30 PSI							
Model	HP	Suction Lift	5'	10'	15'	20'	25'
WLS200	2	Gallons/Hour	4310	4090	3900	3510	3300
WLS150	1.5	Gallons/Hour	3480	3190	2900	2680	2390
WLS100	1	Gallons/Hour	2570	2300	1780	1160	1260
WLS75	3/4	Gallons/Hour	2320	2100	1190	990	840

