



2190 Boul. Dagenais West  
LAVAL (QUEBEC)  
CANADA  
H7L 5X9

TEL: 514.337.4415  
FAX: 514.337.4029  
info@burcam.com

# INSTALLATION INSTRUCTIONS

## MODEL 300507P

### UTILITY PUMP

Please read these instructions carefully. **Failure** to comply to instructions and **designed** operation of this system, may **void** the warranty.

Your pump has been carefully packaged at the factory to prevent damage during shipping. However, occasional damage may occur due to rough handling. **Carefully inspect your pump** for damages that could cause failures. Report any damage to your carrier or your point of purchase.



# SAFETY INSTRUCTIONS:

This fine pump that you have just purchased is designed from the latest in material and workmanship.

Before installation and operation, we recommend the following procedures:

- A** CHECK WITH YOUR LOCAL ELECTRICAL AND PLUMBING CODES TO ENSURE YOU COMPLY WITH THE REGULATIONS. THESE CODES HAVE BEEN DESIGNED WITH YOUR SAFETY IN MIND. BE SURE YOU COMPLY WITH THEM.
- B** WE RECOMMEND THAT A SEPARATE CIRCUIT BE LEAD FROM THE HOME ELECTRICAL DISTRIBUTION PANEL PROPERLY PROTECTED WITH A FUSE OR A CIRCUIT BREAKER. WE ALSO RECOMMEND THAT A GROUND FAULT CIRCUIT BE USED. CONSULT A LICENSED ELECTRICIAN FOR ALL WIRING.
- C** THE GROUND TERMINAL ON THE THREE PRONG PLUGS SHOULD NEVER BE REMOVED. THEY ARE SUPPLIED AND DESIGNED FOR YOUR PROTECTION.
- D** NEVER MAKE ADJUSTMENTS TO ANY ELECTRICAL APPLIANCE OR PRODUCT WITH THE POWER CONNECTED. DO NOT ONLY UNSCREW THE FUSE OR TRIP THE BREAKER, REMOVE THE POWER PLUG FROM THE RECEPTACLE.

## APPLICATION

- This submersible utility pump is designed for a portable application, for dewatering around homes.
- This pump is great for water transfer from basin, pool cover, flodded floor, flat roof.
- May also be used for average flow fountain.

CAPACITY:  
5' 1200 US GPH

10' 1000 US GPH

15' 800 US GPH

FRICTION LOSS  
IN  
PIPE NOT  
INCLUDED

## FEATURES

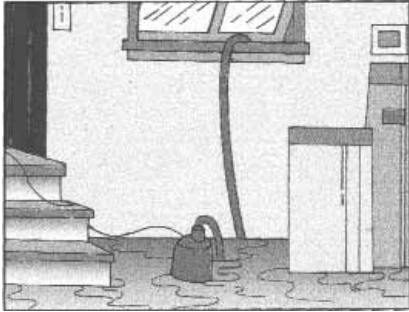
- Non corrosive material.
- Stainless steel mechanical rotary seal.
- Thermal and overload protection.
- 1/4HP, 115VAC, 60Hz, 2.2A, 5A (when start).

### NOTICE

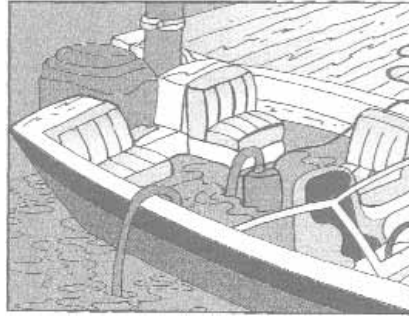
This unit is not designed for applications involving salt water or brine .  
Use with salt water or brine will void warranty.

# TYPICAL APPLICATIONS FOR THIS PRODUCT

☐ REMOVAL OF WATER  
IN BASEMENTS.



☐ BOAT DRAINAGE.



☐ TO FILL WATER TANKS.

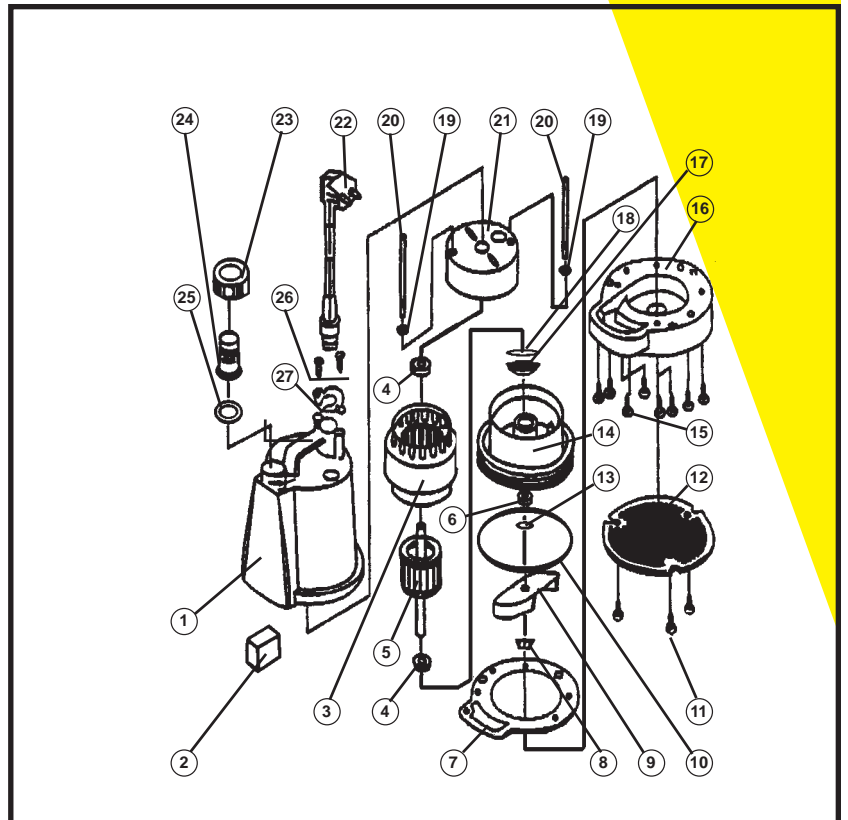


## REPAIR PARTS

### MODEL **300507P**

SUBMERSIBLE UTILITY PUMP

REF	#	DESCRIPTION
1	300449	Pump body
2	300462	Capacitor
3	300447	Stator
4	300450	Bearing
5	300446	Rotor shaft
6	300445	Mechanical seal
7	300454	Motor support
8	300453	Impeller nut
9	300444	Impeller
10	300452	"O" ring
11	300463	Strainer screws (3)
12	300443	Strainer
13	300470	Washer mechanical seal
14	300451	Motor bottom housing
15	300458	Base screws (5)
16	300455	Base
17	300471	Oil seal
18	300472	Oil seal washer
19	300464	Spring
20	300465	Long shaft
21	300448	Motor top housing
22	300442N	Power cable
23	300461	Nut
24	300460	Male adaptor 3/4"
25	300459	Washer
26	300463	Power cable screws (2)
27	300456	Clamp



Repair parts may be ordered from your authorized point of sale or from  
**BUR-CAM PUMPS**

# TROUBLE SHOOTING GUIDE CHECKLIST

NEVER MAKE ADJUSTMENTS TO ANY ELECTRICAL APPLIANCE OR PRODUCT WITH THE POWER CONNECTED. DON'T JUST UNSCREW THE FUSE OR TRIP THE BREAKER, REMOVE THE POWER FROM THE RECEPTACLE.

TROUBLE	PROBABLE CAUSE	ACTION
Motor does not run.	Blown fuse Tripped breaker Plug disconnected Corroded plug Low water level Thermal overloaded  Defective motor	Replace Reset Re-install Clean prongs Add water and verify Unplug the pump for 15 minutes than restart. Replace/repair
Pump does not deliver full capacity.	Jammed impeller Blocked suction/inlet Discharge leak Blocked line/pipe Worn impeller Defective motor	Clean Check for debris in pit and clean Repair Check for debris or ice Repair/replace Replace/ repair

## TO THE END CONSUMER

*If you have any problems with the product, before advising the store, where you've purchased the pump, please contact us at 514 337-4415 , and ask for our sales department, and they will be pleased to help you with any questions you might have, concerning your installation.*