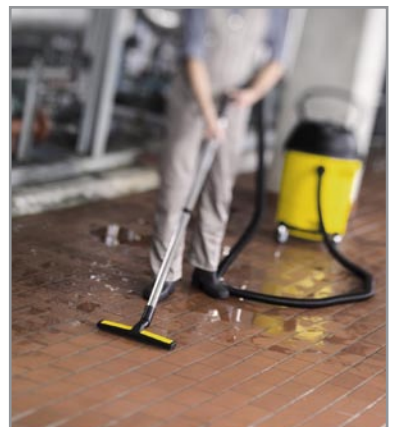
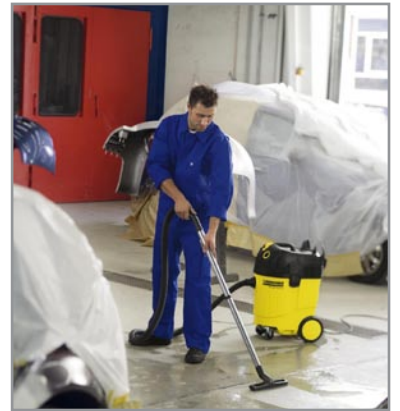


# COMMERCIAL

## Wet/Dry Vacuums

High performance, self cleaning



## Dependable, trouble-free operation.

Kärcher's family of wet/dry vacuums provide dependable trouble-free operation utilizing features unlike any other commercial wet/dry vacuum available on the market today. Kärcher's patented TACT (Trigger Air draft Cleaning Technology) filter system allows for continuous fine and coarse dust retrieval without the need to shut the unit down for filter cleaning. Kärcher's NT vacuums provide continuous suction power throughout the entire job; additionally Kärcher's NT vacuums do not require additional filters or inserts when switching from wet to dry work.\* Once the canister has reached its full capacity an electronic tank level monitor shuts the vacuum motor off.

### **No Filters or Inserts to Install or Remove\*:**

When switching from wet to dry work, or back again, there's nothing for the operator to remember or forget which means no accidental damage to the machine.

### **High Performance Filter Element:**

Large surface area provides longer operation before cleaning is required. Very effective on fine dust. HEPA and waterproof filter options available.

### **Self Cleaning Filter:**

Filter cleans itself while vacuum is being used, no work stoppage from plugged dust filters.

### **Low Noise Level:**

No disruption from loud vacuum cleaner noise.

*\*The NT 48/1 features a cylindrical dust filter without TACT; it requires wet filter bags for water pick-up.*



### **Electronic Tank Level Monitor:**

Shuts the vacuum motor off completely when maximum capacity is reached, including light detergent foam.

### **Swivel, Crush Proof Vacuum Hose:**

No twisting or kinking, much more comfortable for operators to use.

### **Rugged Housing and Base:**

Impact-resistant construction. Base bumper protects furniture and fixtures

### **Optional Drain Hose Attachment:**

For easily draining the unit after wet pick-up (standard on NT 48/1)



Model	NT 35/1	NT 45/1	NT 65/2	NT 48/1
Order Number	1.184-804.0	1.145-804.0	1.325-105.0	1.428-605.0
Vacuum Motor(s)/AMPS	1,265 watt (max.) X 1/8 AMPS	1,265 watt (max.) X 1/8 AMPS	1,265 watt (max) X 2/18 AMPS	1,200 watt X 1 / 10 AMPS
Air Flow Rating	120 (CFM)	120 (CFM)	229 (CFM)	141 (CFM)
Water Lift Rating	88"	88"	94"	80"
Container Capacity	9.2 gallons (35 l)	11.9 gallons (45 l)	17.2 gallons (65 l)	12.6 gallons (48 l)
Filtration System	TACT	TACT	TACT	Traditional Cylindrical
Noise Level	64 db(A)	64 db(A)	74 db(A)	66 db(A)
Power Cord Length	25 ft	25 ft	33 ft	25 ft
Hose Length & Dia.	8' X 35MM	8' X 35MM	12' X 35MM	8' X 35MM
Dust Bag	2-ply paper bag	2-ply paper bag	2-ply paper bag	Paper Filter Bag
Weight	25.3 lbs.	27.5 lbs.	41.9 lbs	22 lbs.
Standard Tools	Metal Wand, Floor Tool, Crevice Tool, Washable Nylon Filter	Metal Wand, Floor Tool, Crevice Tool, Washable Nylon Filter	Metal Wand, Floor Tool, Crevice Tool, Washable Nylon Filter	Metal Wand, Floor Tool, Crevice Tool, Cylindrical Dust Filter
Dimensions	20.4" X 15" X 22.8" (815 X 381 X 579 MM)	20.4" X 15" X 27" (815 X 381 X 695 MM)	23.6" X 18.9" X 36.2" (600 X 480 X 920 MM)	19" X 15.4" X 30.3" (485 X 390 X 770 MM)

**YOUR AUTHORIZED KÄRCHER DEALER:**

MEMBER OF  
  
 CLEANING EQUIPMENT TRADE ASSOCIATION

ISSA MEMBER  
 The Experts  
 on Cleaning and Maintenance

Kärcher Commercial Floor Care  
[www.KarcherFloorcare.com](http://www.KarcherFloorcare.com)  
[info@karcherfloorcare.com](mailto:info@karcherfloorcare.com)  
 888-805-9852 • Fax 800-248-8409

P/N 9.800-468.0 • 9/09