



2190 Boul. Dagenais West
LAVAL (QUEBEC)
CANADA
H7L 5X9

TEL: 514.337.4415
FAX: 514.337.4029
info@burcam.com

Your pump has been carefully packaged at the factory to prevent damage during shipping. However, occasional damage may occur due to rough handling.

Carefully inspect your pump for damages that could cause failures. Report any damage to your carrier or your point of purchase.



INSTALLATION INSTRUCTIONS

MODEL 300503 UTILITY PUMPS

Please read these instructions carefully. **Failure** to comply to instructions and **designed** operation of this system, may **void** the warranty.

SAFETY INSTRUCTIONS:

This fine pump that you have just purchased is designed from the latest in material and workmanship.

Before installation and operation, we recommend the following procedures:

- A** CHECK WITH YOUR LOCAL ELECTRICAL AND PLUMBING CODES TO ENSURE YOU COMPLY WITH THE REGULATIONS. THESE CODES HAVE BEEN DESIGNED WITH YOUR SAFETY IN MIND. BE SURE YOU COMPLY WITH THEM.
- B** WE RECOMMEND THAT A SEPARATE CIRCUIT BE LEAD FROM THE HOME ELECTRICAL DISTRIBUTION PANEL PROPERLY PROTECTED WITH A FUSE OR A CIRCUIT BREAKER. WE ALSO RECOMMEND THAT A GROUND FAULT CIRCUIT BE USED. CONSULT A LICENSED ELECTRICIAN FOR ALL WIRING.
- C** THE GROUND TERMINAL ON THE THREE PRONG PLUGS SHOULD NEVER BE REMOVED. THEY ARE SUPPLIED AND DESIGNED FOR YOUR PROTECTION.
- D** NEVER MAKE ADJUSTMENTS TO ANY ELECTRICAL APPLIANCE OR PRODUCT WITH THE POWER CONNECTED. DO NOT ONLY UNSCREW THE FUSE OR TRIP THE BREAKER, REMOVE THE POWER PLUG FROM THE RECEPTACLE.

APPLICATION

- This submersible utility pump is designed for a portable application.
- Can also be used for mini fountains.
- This pump is ideal for water transfer from basin, pool cover, flooded floor, flat roof.

CAPACITY:

5	1525	US GPH
10'	1270	US GPH
15	1000	US GPH
20'	525	US GPH
25'	200	US GPH

FRICITION LOSS
IN
PIPE NOT
INCLUDED

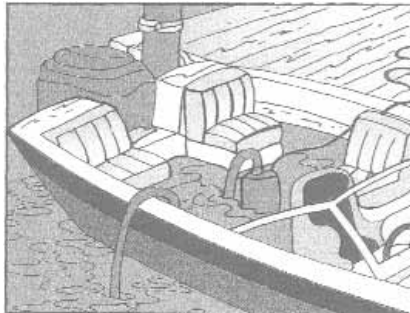
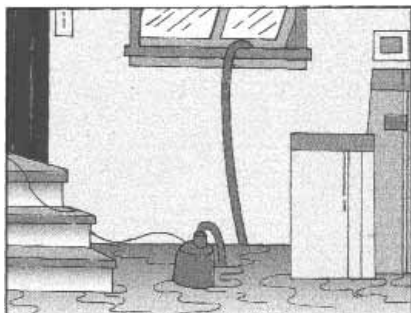
FEATURES

- Non corrosive material.
- Stainless steel mechanical rotary seal.
- Thermal and overload protection.
- 1/4HP, 115VAC, 60Hz, 2.2A, 5A (when start).

NOTICE

This unit is not designed for applications involving salt water or brine .
Use with salt water or brine will void warranty.

TYPICAL APPLICATIONS FOR THIS PRODUCT

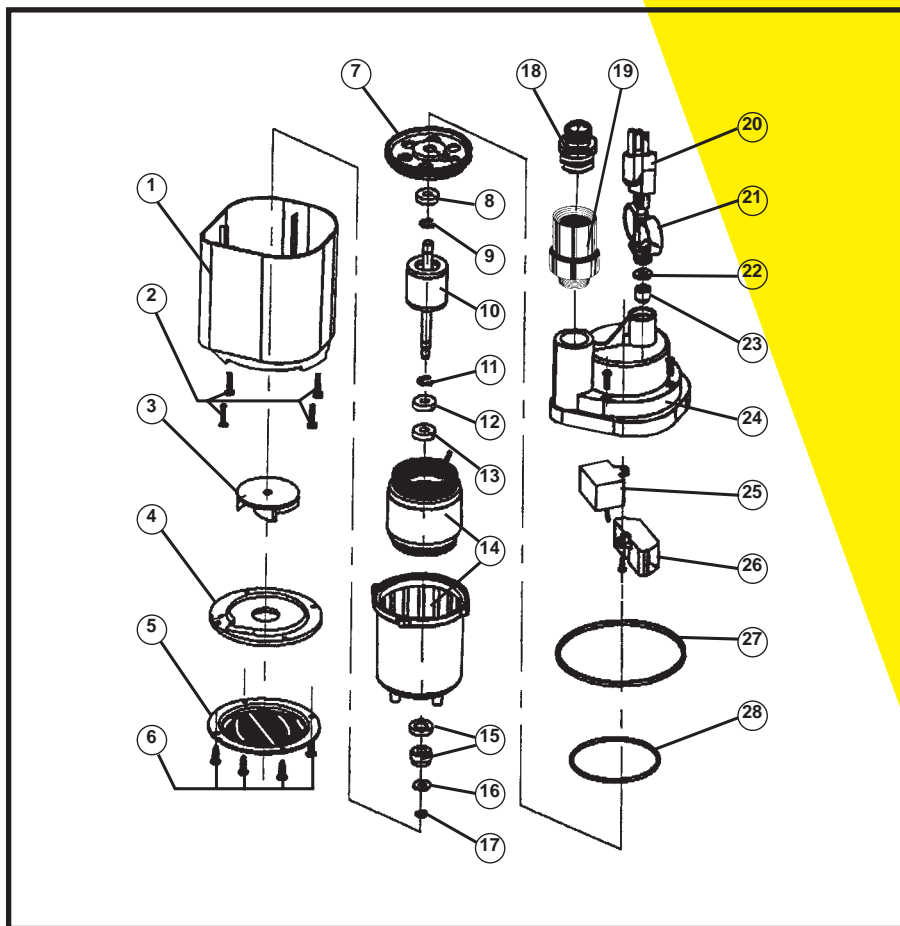


REPAIR PARTS

MODEL 300503

SUBMERSIBLE UTILITY PUMP

REF	MODEL	DESCRIPTION
1	310353	Pump body
2	310373	Screws for body
3	310352	Impeller
4	310351	Volute cover
5	310350	Bottom plate
6	310374	Screws for plate
7	310362	Motor bracket
8	310359	Ball bearing
9	310360	Snap ring
10	310361	Rotor
11	310360	Snap ring
12	310359	Ball bearing
13	310358	Lip seal
14	310357	Motor / stator & housing
15	310356	Mechanical seal
16	310355	Washer
17	310354	Snap ring
18	310372	Hose adaptor
19	310349	Check valve
20	310371	Power cable
21	310370	Handle
22	310369	Brass washer
23	310368	Rubber gasket
24	310367	Pump cover
25	310366	Capacitor
26	310365	Automatic Control
27	310364	Pump O ring
28	310363	Motor O ring



Repair parts may be ordered from your authorized point of sale or from
BUR-CAM PUMPS

TROUBLE SHOOTING GUIDE CHECKLIST

NEVER MAKE ADJUSTMENTS TO ANY ELECTRICAL APPLIANCE OR PRODUCT WITH THE POWER CONNECTED. DON'T JUST UNSCREW THE FUSE OR TRIP THE BREAKER, REMOVE THE POWER FROM THE RECEPTACLE.

TROUBLE	PROBABLE CAUSE	ACTION
Motor does not run.	<ul style="list-style-type: none"> Blown fuse Tripped breaker Plug disconnected Corroded plug Low water level Thermal overloaded Defective motor 	<ul style="list-style-type: none"> Replace Reset Re-install Clean prongs Add water and verify Unplug the pump for 15 minutes than restart. Replace/repair
Pump does not deliver full capacity.	<ul style="list-style-type: none"> Jammed impeller Blocked suction/inlet Discharge leak Blocked line/pipe Worn impeller Defective motor 	<ul style="list-style-type: none"> Clean Check for debris in pit and clean Repair Check for debris or ice Repair/replace Replace/ repair

TO THE END CONSUMER

If you have any problems with the product, before advising the store, where you've purchased the pump, please contact us at 514 337-4415 , and ask for our sales department, and they will be pleased to help you with any questions you might have, concerning your installation.